

2001 Census data on workers

Eileen Howes

Principal Research and Statistical Analyst

Data Management and Analysis Group



Data Management and Analysis Group

GREATER **LONDON** AUTHORITY

Structure of presentation

- Where the workers data comes from
- What data is available from standard datasets
- Other data available
- My favourite table
- A few things we have done with this table

Where the workers data comes from

Questions on:

What each person did in their main job

Address of place of work linked with where they lived

The Data: Sources

- Standard Tables
- Special Workplace Statistics
- Commissioned tables

- Available free from ONS if you know what to ask for

The Data: Standard Tables

- ST129 – Distance travelled and means of travel by sex for workers, ward level
- ST130 – Industry and distance travelled by sex for workers, LA districts
- ST131 - Industry and highest level of qualifications by sex for workers, LA districts
- ST132 – Industry by occupation by sex for workers, LA districts

The Data: Special Workplace Statistics

- Huge matrix of flows of workers
- Origin and destination
- Tables of various characteristics for each flow
- Some detail at Output Area level
- Complicated dataset
- Problems with disclosure control method

The Data: Commissioned Tables

- Users can commission tables based on workers rather than residents
- Examples are SWS OA to district for London
- Workers in london boroughs by ethnic group

The data: My Favourite Table

Standard Theme Table 10

Theme Table on resident, workplace
and daytime populations

Available down to ward level

Theme Table 10

Columns for:

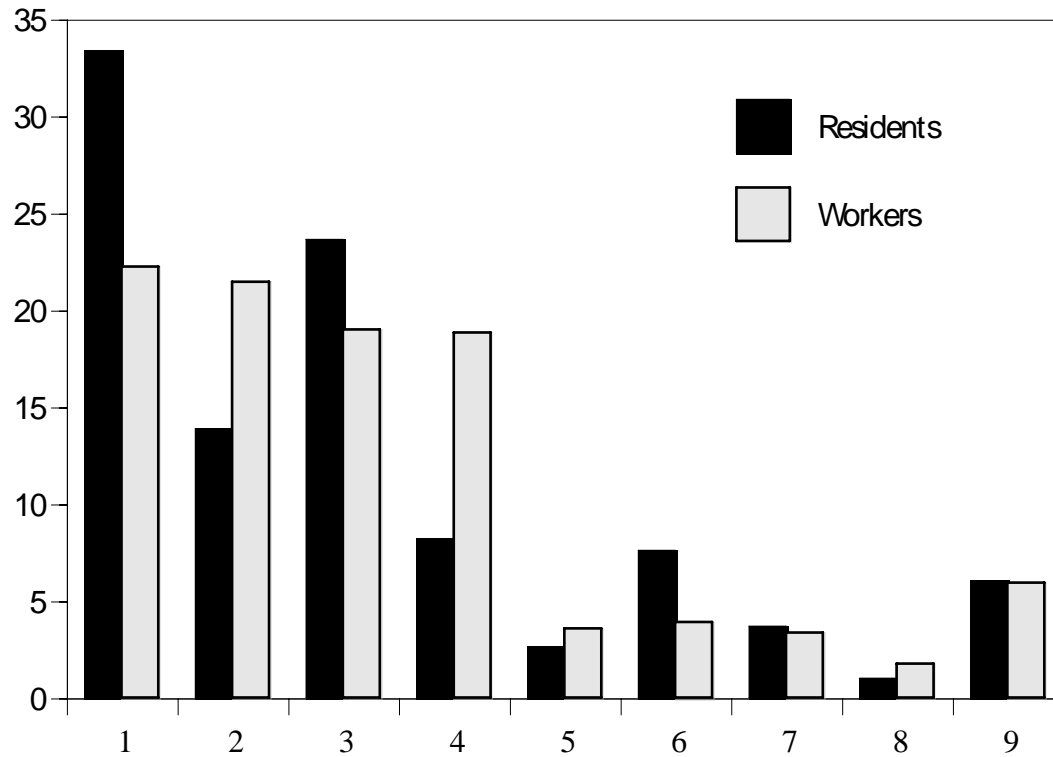
- Residents
- Lives in area, works outside
- Lives and works in area
- Lives outside area and works inside
- Lives in area and does not work
- Workplace population
- Daytime population

Theme Table 10

Rows for:

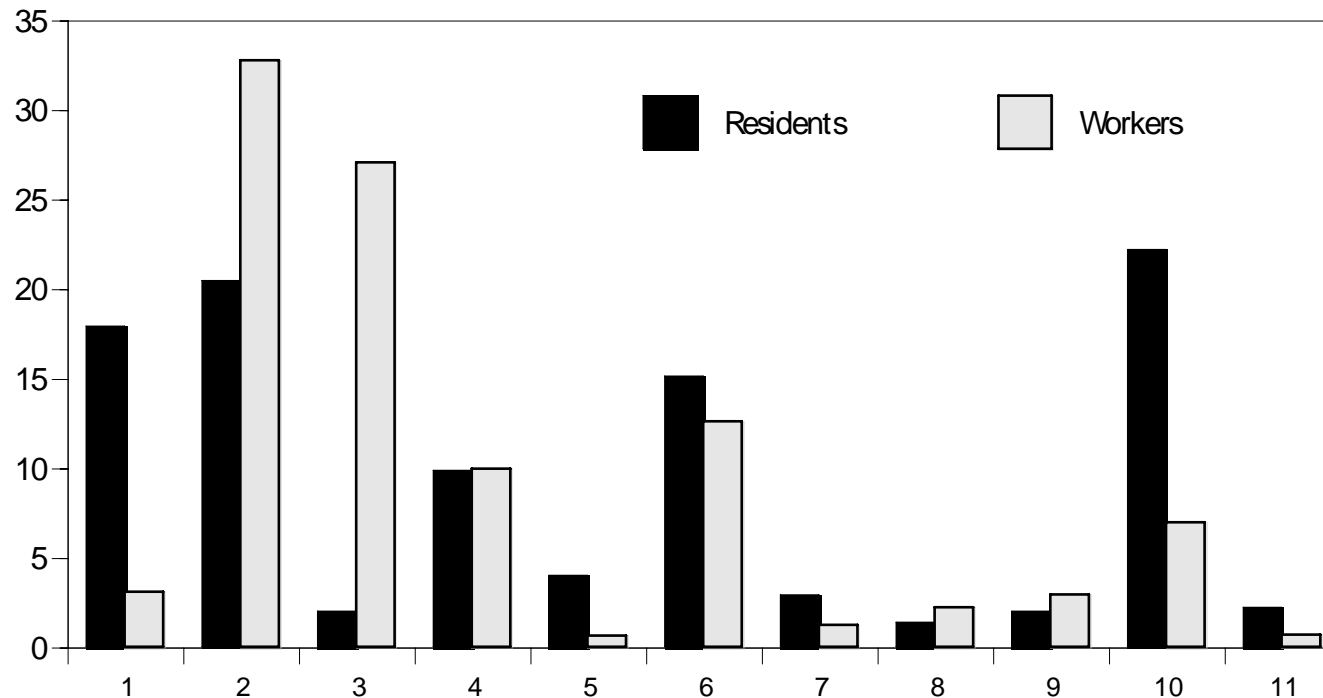
- People, male, female
- Age
- Family status
- Occupation
- NS-SeC
- Industry (LA level and above)
- Distance travelled to work
- Means of travel to work
- Hours worked

Knightsbridge and Belgravia



- 1 Managers and senior officials
- 2 Professional
- 3 Ass. Professional
- 4 Admin and secretarial
- 5 Skilled trades
- 6 Personal services
- 7 Sales
- 8 Process, plant and machine ops
- 9 Elementary

Knightsbridge and Belgravia



1 Works at home
2 Underground
3 Train
4 Bus
5 Taxi

6 Car driver
7 Car passenger
8 Motorcycle
9 Bicycle
10 On foot
11 Other

Knightsbridge and Belgravia

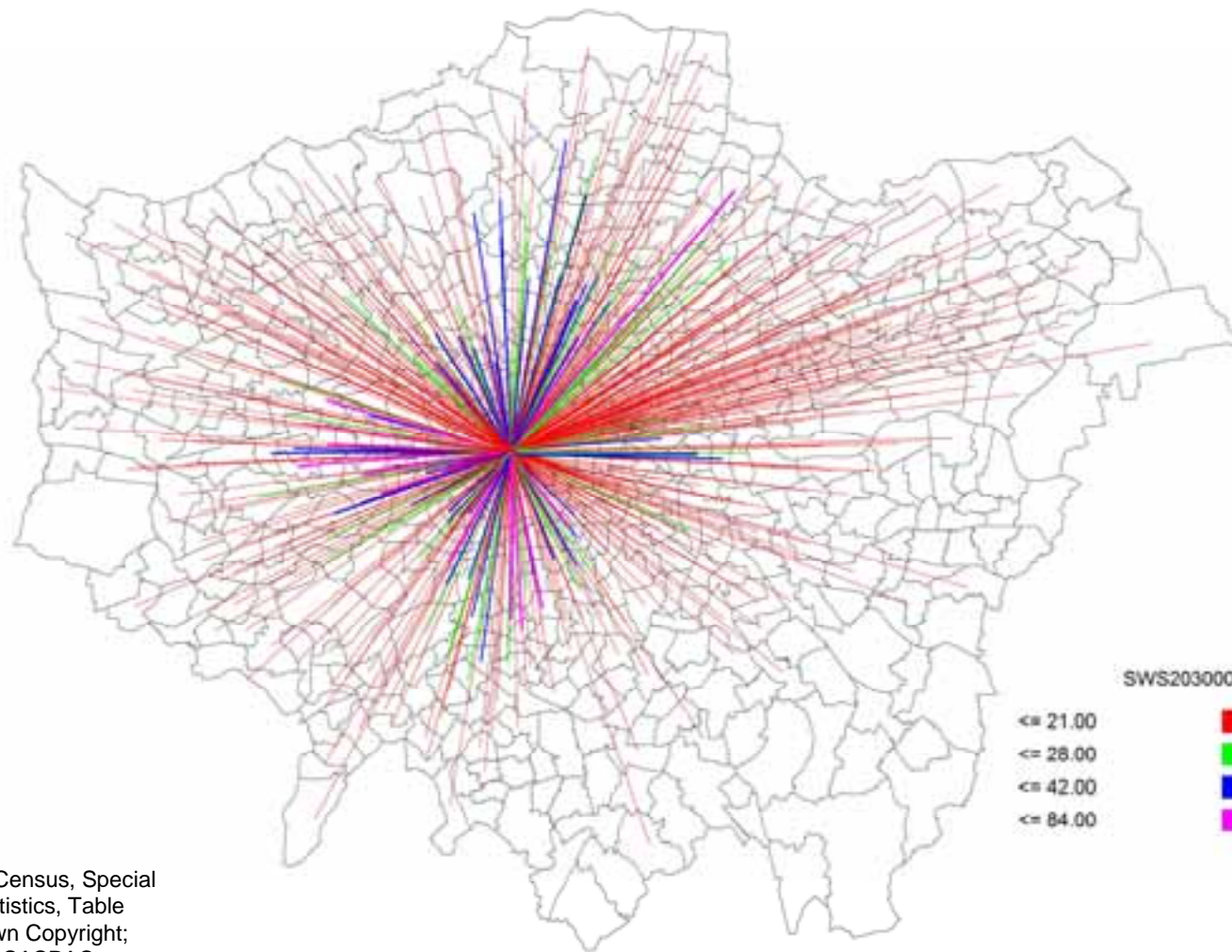
Total workers	24,444	
Workers who live in area	1,521	6%
Workers who live outside area	22,923	94%

Source: 2001 Census Commissioned Tables C0198 and C0199

© Crown Copyright. Greater London Authority

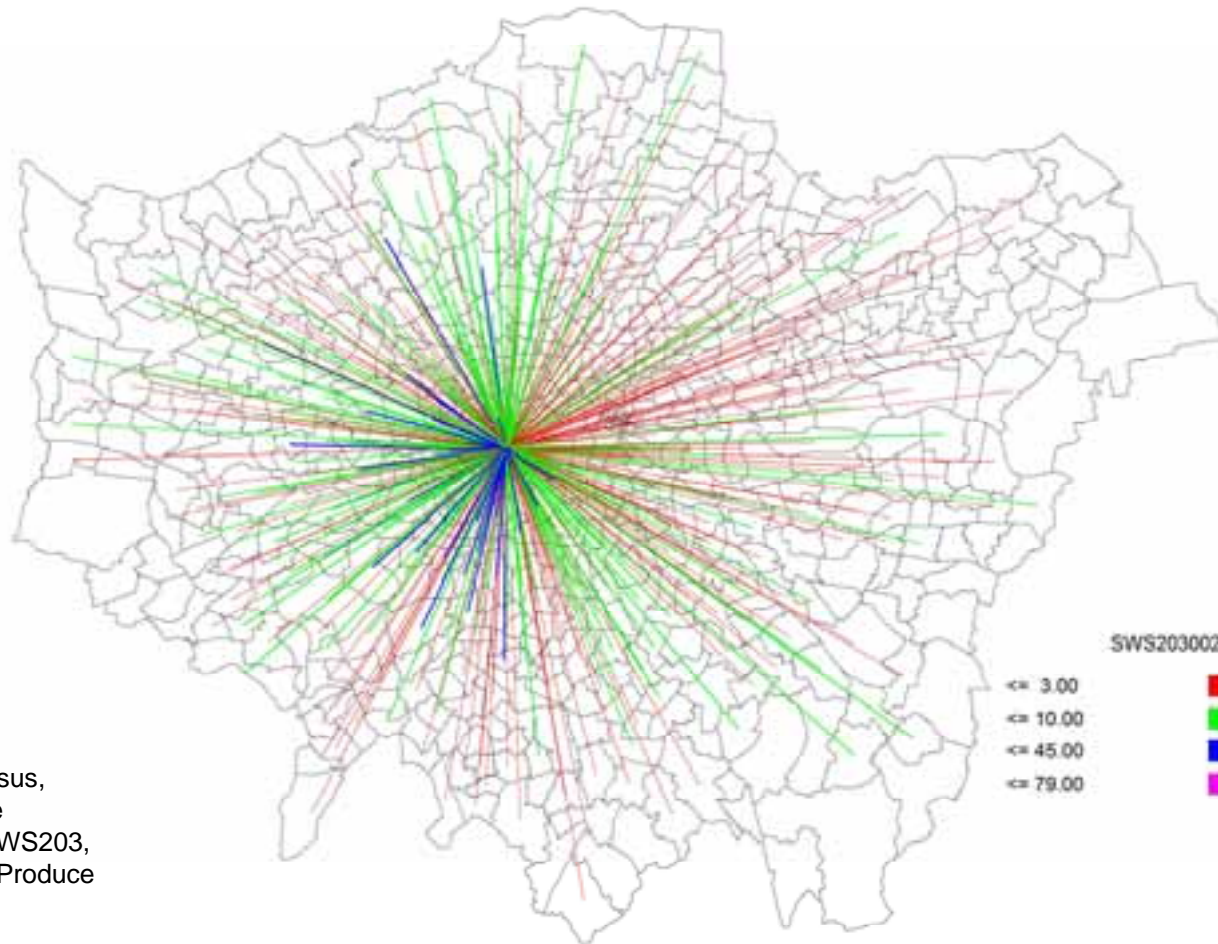
(LA100032379) 2005

Commuting by underground into Knightsbridge and Belgravia



Source: 2001 Census, Special
Workplace Statistics, Table
SWS203, Crown Copyright;
Produce using SASPAC

Commuting by car into Knightsbridge and Belgravia



Source: 2001 Census,
Special Workplace
Statistics, Table SWS203,
Crown Copyright; Produce
using SASPAC